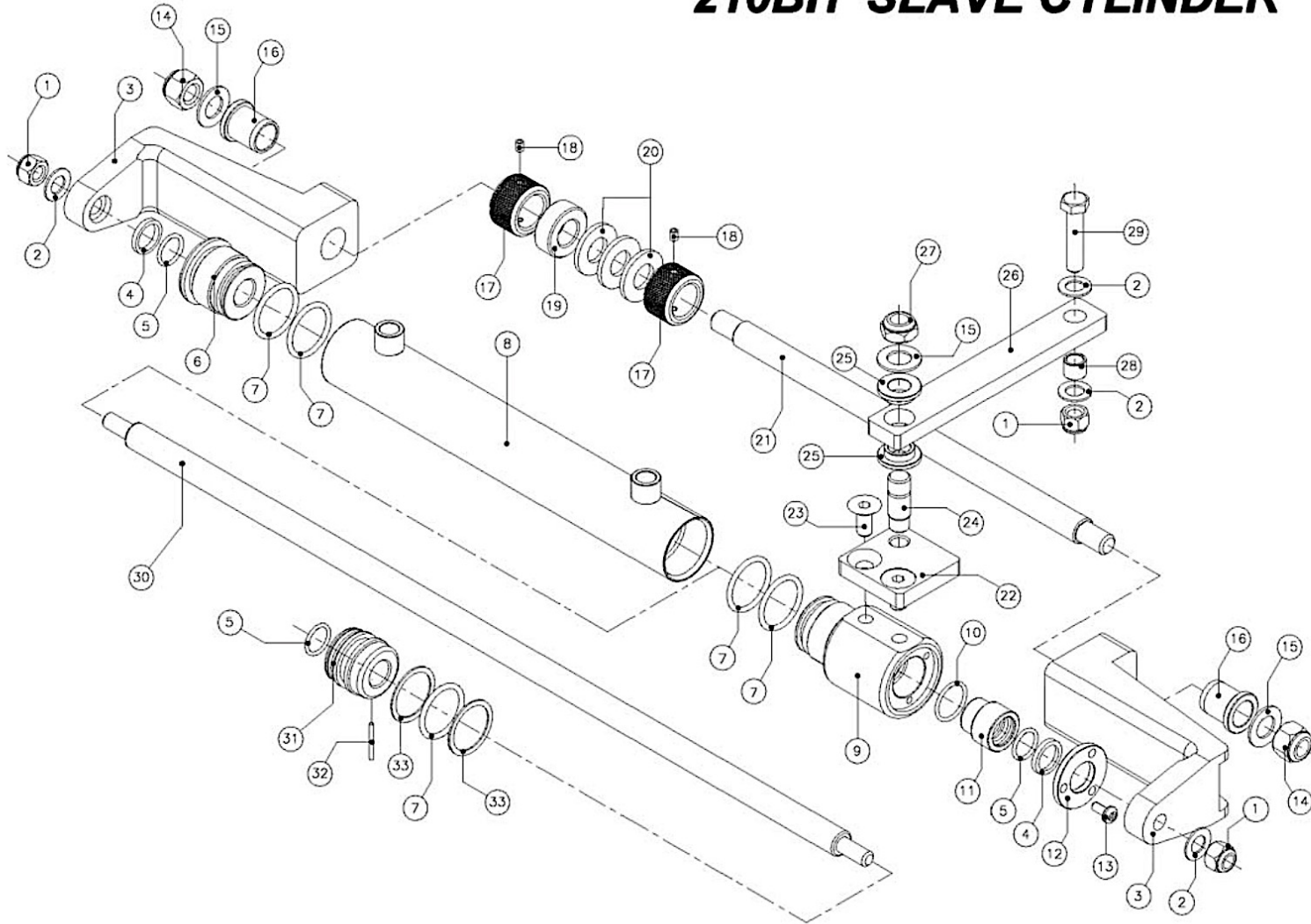


## 210BH SLAVE CYLINDER



## 210 BH SLAVE CYLINDER

NUMBER	DESCRIPTION	PART NUMBER	QTY
1	3/8" UNF NYLOC 316 S/S NUT	NU-10133	3
2	3/8x3/4x18G 304 S/S WASHER	WA-10135	4
3	210 BULL HORN	BH-6161	2
4	ROD WIPER SEAL	WS-10252	2
5	O-RING PISTON ROD	RVO-114	3
6	END CAP FREE END	EC-6345	1
7	O-RING CYLINDER	RVO-216	5
8	210 CYLINDER	CY-6343	1
9	END CAP MOUNTING END	EC-6346	1
10	O-RING ROD GUIDE	RVO-117	1
11	ROD GUIDE BUSH	BU-6312	1
12	ROD GUIDE RETAINER	EC-6154	1
13	M5x12 PHILLIP PAN HEAD	SC-10130	3
14	1/2" UNC NYLOC 304 S/S NUT	NU-10134	2
15	1/2"x1"x16G WASHER 304 S/S	WA-10136	3
16	HEADER BUSH	BU-6158	2
17	ADJUSTING NUT TILT TUBE	NU-6172	2
18	10x24UNCx1/4" GRUB SCREW	SC-10137	2
19	12.0mm SPACER BUSH	BU-6173	1
20	3.0mm SPACER BUSH	BU-6156	3
21	TILT TUBE ROD	SH-6164	1
22	TILLER MOUNTING PLATE	MO-6341 STD MO-6187 CLASSIC	1
23	M10x20 HEX COUNTER SINK	SC-10155	2
24	MOUNTING PLATE STUD	ST-6318	1
25	PIVOT BUSH TILLER ARM	BU-6314	2
26	TILLER ARM	TA-6342	1
27	1/2"UNFx8.0 304 S/S NUT	NU-10185	1
28	BUSH TILLER ARM BOLT	BU-5507	2
29	3/8UNFx1 3/4 304S/S BOLT	SC-10131	1
30	PISTON ROD 210BH	PR-6313	1
31	210 PISTON	PI-6358	1
32	DOWEL PIN 3/16"x1 1/4"	DO-10166	1
33	BACK UP WASHER 8-216	BW-10100	2