

HD SERIES - HELM UNITS

Full feed-back type helm unit
 No in-built lock-valve
 Stainless steel steering wheel shaft

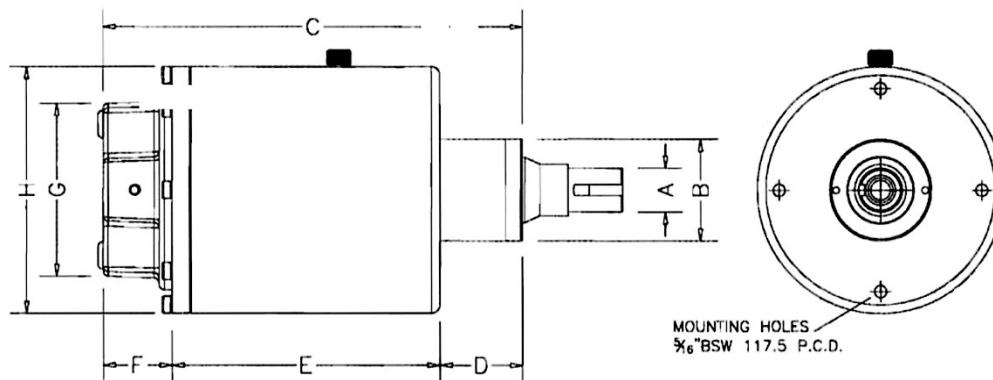


Models
 103, 104 & 105
 with parallel shaft as standard
 Also available in international
 taper shaft or Lewmar Taper
 shaft versions

Models
 106 & 107
 with parallel shaft as standard.
 Lewmar Taper also available

MODELS

103, 104, 105, 106 & 107



MODEL	A	B	C	D	E	F	G	H
103	T	59	244	48	156	40	102	144
104	P	59	244	48	156	40	102	144
105	P	59	244	48	156	40	102	144
106	P	59	276	48	182	46	112	170
107	P	59	276	48	182	46	112	170

T=3/4" dia TAPER(1'per ft) SHAFT - 3/4"X3/16" WOODRUFF KEY
 P= 1" dia PARALLEL SHAFT - 1/4"X1" SQUARE KEY

DISPLACEMENTS

Model 103 - 2.00 cu ins (35cc) per rev Model 106 - 7.5 cu ins (125cc) per rev
 Model 104 - 2.60 cu ins (43cc) per rev Model 107 - 10 cu ins (165cc) per rev
 Model 105 - 5.20 cu ins (86cc) per rev

Maximum Working Pressure - 1000psi Design Pressure - 1500psi