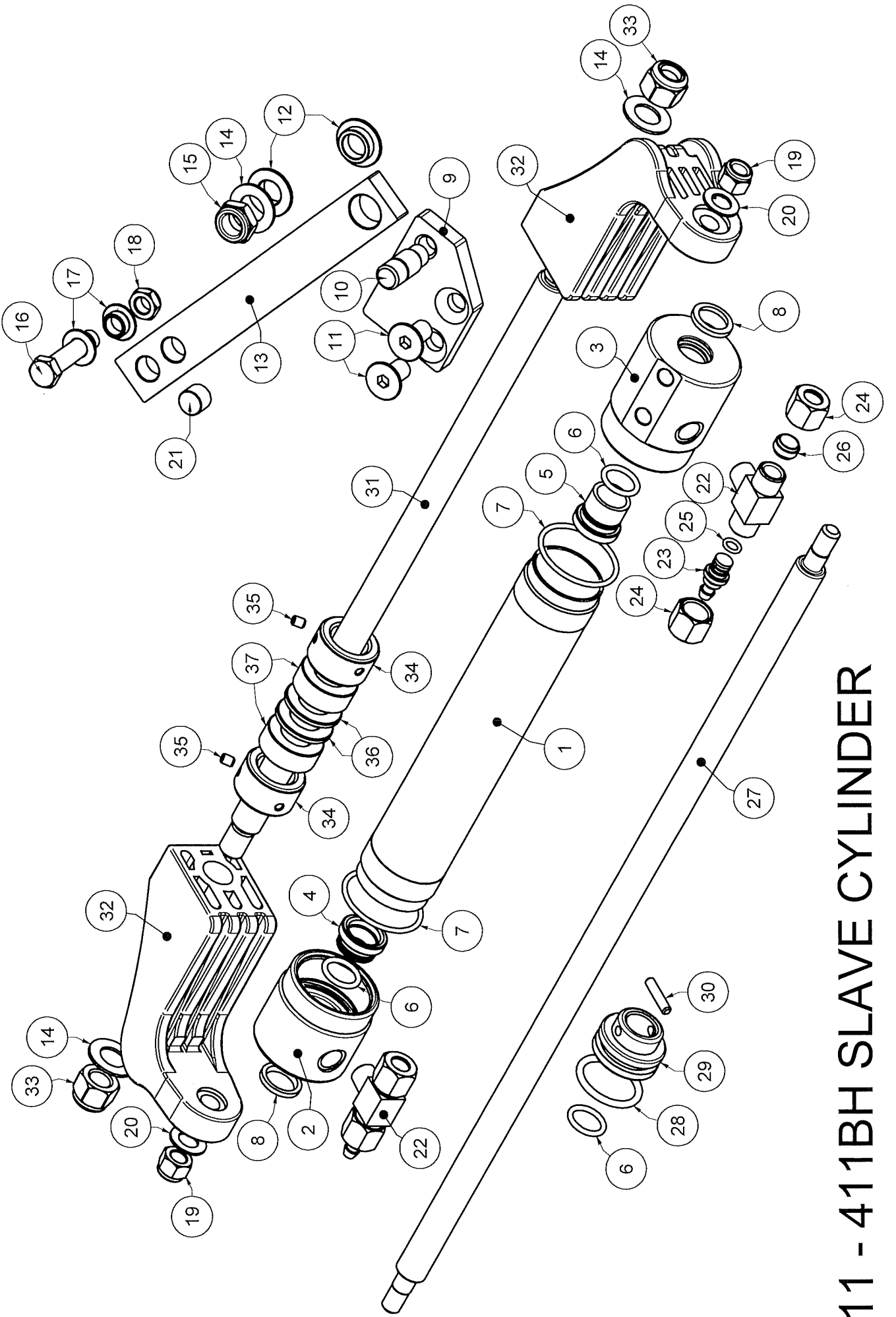


211 - 411BH SLAVE CYLINDER



211 - 411 BH SLAVE CYLINDER

211

411

NUMBER	DESCRIPTION	PART NUMBER	PART NUMBER	QTY
1	CYLINDER	CY-6168	CY-6174	1
2	END CAP FREE END	EC-6166	EC-6100	1
3	END CAP MOUNTING END	EC-6167	EC-6101	1
4	ROD GUIDE FREE END	RG-6163		1
5	ROD GUIDE MOUNTING END	RG-6162		1
6	O-RING	RVO-114		3
7	O-RING	RVO-128		2
8	WIPER	LDW-00625		2
9	TILLER PLATE (MO-6177SA COMPLETE)	MO-6177		1
10	TILLER STUD	ST-6441		1
11	SCREW	SC-10155		2
12	TILLER ARM BUSH	BU-6314		2
13	TILLER ARM	TA-6175		1
14	WASHER 1/2"x1"X16G-304 S/S	WA-10136		3
15	NUT 1/2" UNFx8.0 NYLOC 304 S/S	NU-10185		1
16	BOLT 3/8"x1 1/2" S/S	SC-10315		1
17	BUSH - TILLER BOLT	BU-5507		2
18	NUT 3/8"UNF NYLOC S/S THIN	NU-10139		1
19	NUT 3/8" UNF NYLOC 316 S/S	NU-10133		2
20	WASHER 3/8x3/4x18G 304 S/S	WA-10135		2
21	TILLER ARM BLANK PLUG	PL-6244		1
22	BLEEDER TEE 3/8" (BL-10186A COMPLETE)	BL-10186		2
23	BLEEDER VALVE 3/8"	BL-6309		2
24	NUT 3/8" BRASS	NU-6322		4
25	O-RING	RVO-010		2
26	OLIVE 3/8" BRASS	FI-10199		2
27	PISTON ROD	PR-6169		1
28	O-RING	RVO-216		1
29	PISTON	PI-6374		1
30	DOWEL PIN 3/16"x7/8"	DO-10184		1
31	TILT TUBE ROD	SH-6164		1
32	BULL HORN	BH-6165		2
33	LOCKNUT 1/2" UNC	NU-10134		2
34	ADJUSTING NUT	NU-6172		2
35	GRUB SCREW 10x24UNCx1/4" S/S	SC-10137		2
36	SPACER 3mm	BU-6156		2
37	SPACER 12mm	BU-6173		2