

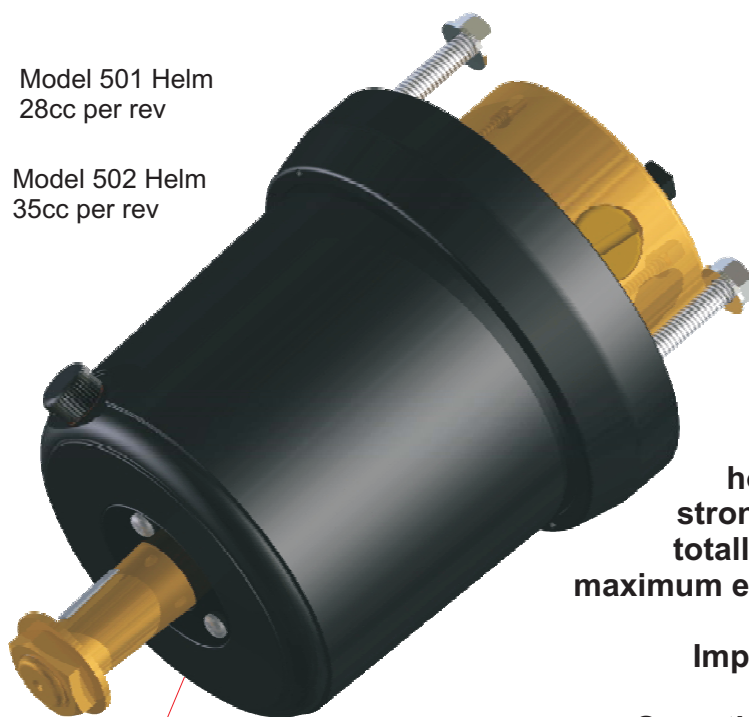
# PRODUCT NEWS

## Commander Series

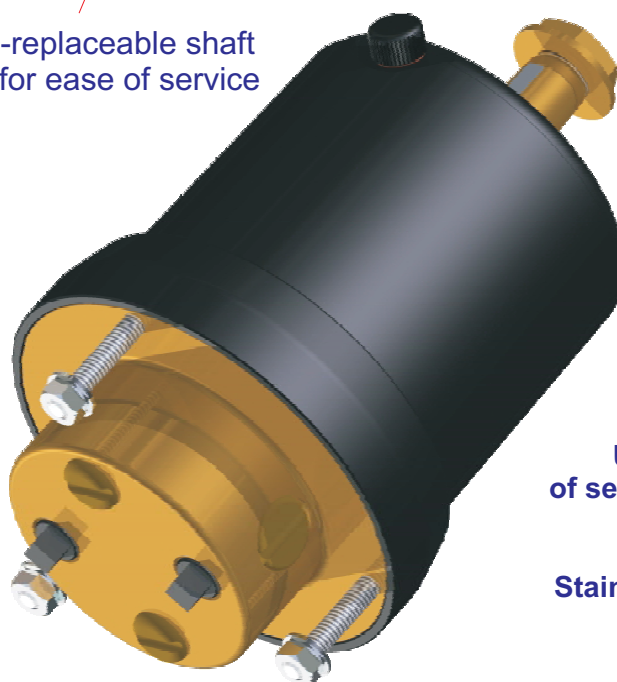
The new Commander Series 501 and 502 helm units combine the elements of great performance and economic design, consolidating HyDrive Engineering's position as a world-leader in hydraulic boat steering. Two years of design development and testing have resulted in these helms being selected as the standard helm supplied in the all-new Commander Series kits for outboards and inboards which also feature the new 511 series cylinders.

Model 501 Helm  
28cc per rev

Model 502 Helm  
35cc per rev



Field-replaceable shaft  
seal for ease of service



### FEATURES

Sleek new shape  
to match modern  
console designs

Front-mount design for  
maximum appeal

Hi-Tech composite alloy  
housing material which is  
stronger than aluminium and  
totally corrosion resistant for  
maximum exposure to the elements

Improved internal efficiency

Smooth and powerful operation

Cad plated wheel nut  
and washer

High tensile anodised  
Aluminium steering shaft

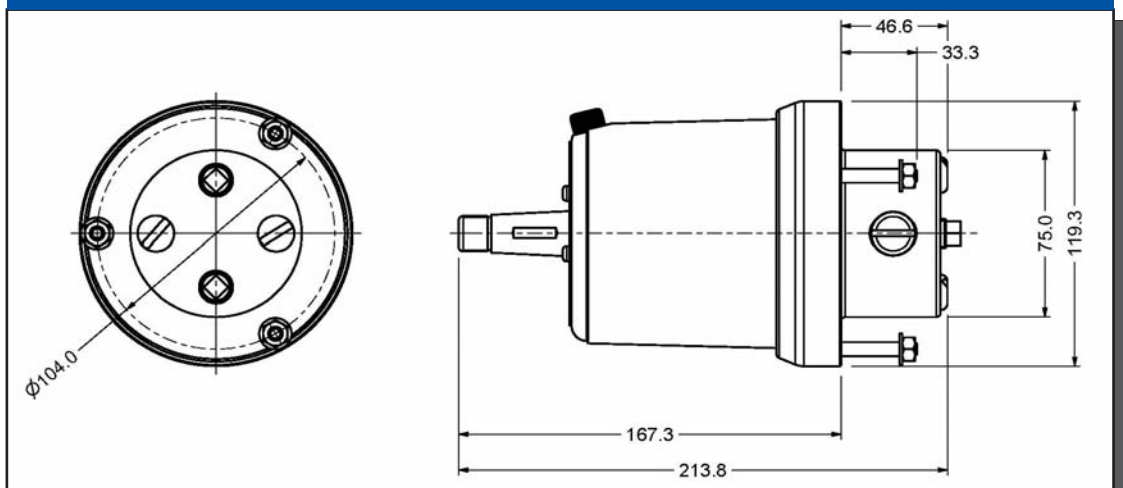
Anti-splash filler cap for  
rough conditions

Unique assembly design for ease  
of service and maximum performance

Stainless steel studs, nuts & washers  
pre-fitted for convenience

Highly efficient non-return valves for non feedback  
of helm unit - eliminates all torque from the steering cylinder

## HELM DIMENSIONS - MODEL 501 & 502



**COMKIT1  
OUTBOARD KIT**  
Complete with:-  
1 x 501N8 helm  
1 x 511BH cylinder  
2 litres ULTRA-15  
15M nylon hydraulic  
tubing  
Fittings  
Bleeding kit  
Instructions



*Full range of other kits available to suit outboards, sterndrives and inboards*

## OPTIONAL ACCESSORIES TO SUIT 501 HELMS

### REAR-MOUNT KIT

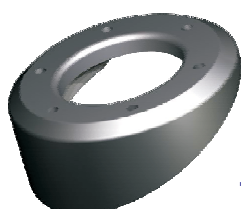


REAR-MOUNT Kit - fits any model 501 & 502 helm unit - adjustable from low-profile to full protrusion for maximum flexibility in helm placement. Simply trim the spacers and studs to adjust the amount of penetration into the helm position. The front dash or console ring is fully O-ring sealed against pump body to prevent water ingress to the rear of the console. Easy to fit - easy to adjust - looks great.

### Rear-mount from front



### 20 DEGREE WEDGE



WEDGE-401 20 degree wedge kit for mounting horizontal to vertical installations fits any standard model 501 and 502 helm unit.

**The new 501 & 502 series helms - now the most versatile helms on the market!**

