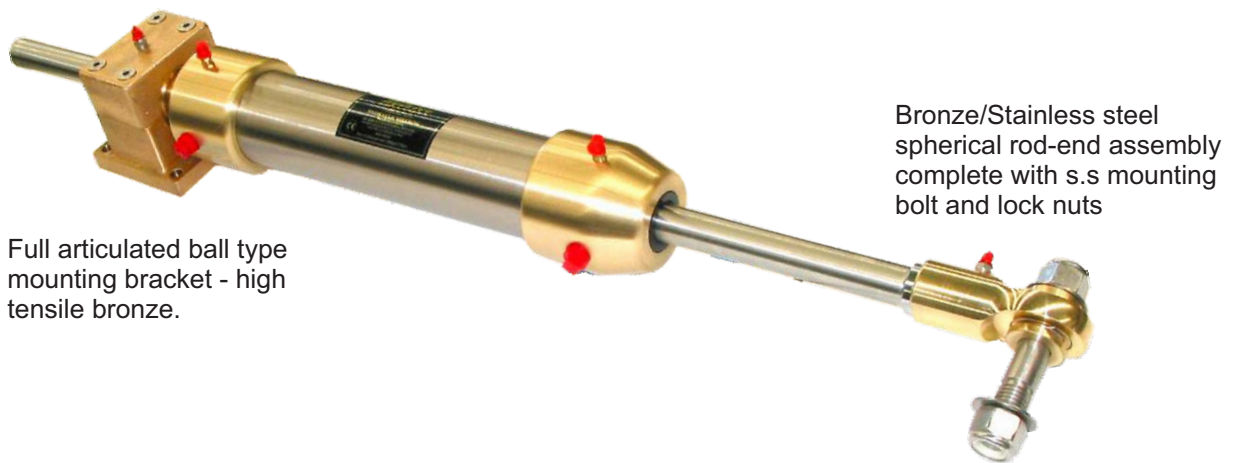


# HD SERIES - CYLINDERS

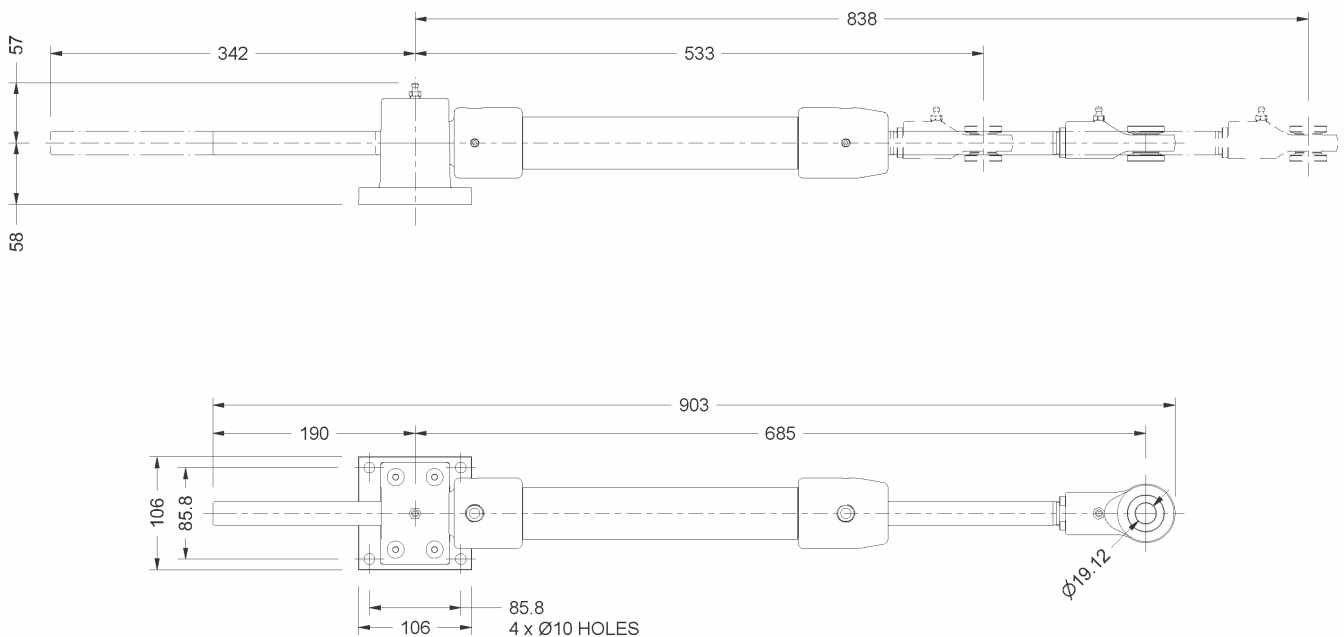


Full articulated ball type mounting bracket - high tensile bronze.

Bronze/Stainless steel spherical rod-end assembly complete with s.s mounting bolt and lock nuts

## MODEL HD150-12

### NOMINAL DIMENSIONS



NOTE: dimensions are nominal only and subject to change without notice. These dimensions should be used only as a general guide to the footprint of space required. Final drilling and fitting of the cylinder should only be done once the unit has been delivered and on-site.

Bore diameter:- 1.5"  
Stroke - 12" ( 304mm)  
Volume - 229cc  
Tiller length - 265mm

Cylinder thrust @ 1000psi = 529KgF  
Rudder torque @ 1000psi @ 0 degrees = 141KgM  
Rudder torque @ 1000psi @ 35 degrees = 115KgM

Maximum Working Pressure - 1500psi