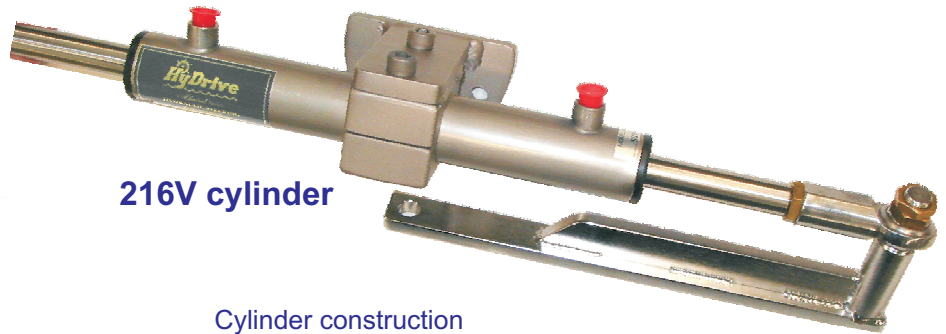


HYDRAULIC STEERING FOR STERNDRIVES



216V cylinder

Cylinder construction
Bronze, Brass and Stainless steel

VOLVOKIT For STERNDRIVES - VOLVO MERCURISER-KIT same details except **210MERC** cylinder used

HyDrive has released the new 216V sterndrive cylinder for VOLVO which is now being supplied as the standard model for all VOLVOKIT systems. The new model is designed for use on the **Volvo Model DPS & SX** sterndrives and has a new type of mounting plate, new drag link and spherical rod-end for better alignment. The cylinder is internally stroke-limited to avoid collision with the transom shield.

While the unit looks similar to the popular 210MERC cylinder for Mercruiser sterndrives, they are not interchangeable. Basic specifications of the VOLVO and MERCURISER systems are the same - only the cylinder model is changed.

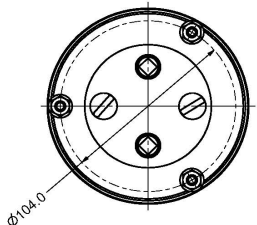
The **original 210V** cylinders should only be used on the older **DPD** to **DPE** models.

The new cylinder is more expensive, but does include the drag link which was not required with the older model and has heavier piston rod and rod-end, making it a significantly different unit.

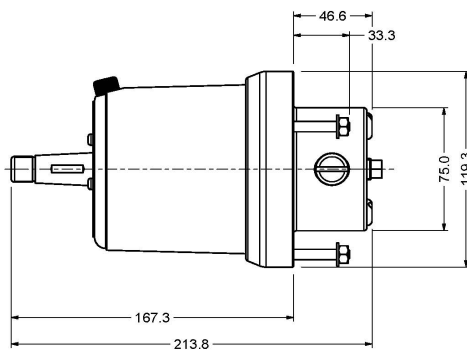
Note: This cylinder type should only be used in installations where the standard 210T or 210TSE type cylinder cannot be used due to restricted side clearance. For **POWER STEERING** systems supplied with the stern-drive use the **SPORTKIT**

Model 210V, 216V
or 210MERC Cylinder details

Capacity:- 125cc
Stroke:- 186mm
Weight:- 5Kg



WHEEL TURNS
lock to lock
401 helm = 4.4
402 helm = 3.5



Model 401 and 402 Helm pump dimensions

Model 401 Capacity:-28cc/rev
Model 402 Capacity:-35cc/rev
In-built Lock valve
Maximum working pressure:- 1000psi
Absolute maximum pressure:- 1500psi
Weight:- 5Kg

See also optional helm choices for front-mount and tilting helms for this kit

VOLVOKIT

Complete Kit comprises:-
Model 401 Helm
Model 216V or 210V cylinder
2 litres ULTRA-15 fluid
15Mtrs 3/8" OD Nylon tubing
Bleeding Kit
All fittings
Installation Manual
Packed weight 15Kg

MERCURISERKIT

Complete Kit comprises:-
Model 401 Helm
Model 210MERC cylinder
2 litres ULTRA-15 fluid
15Mtrs 3/8" OD Nylon tubing
Bleeding Kit
All fittings
Installation Manual
Packed weight 15Kg

