

HD SERIES - CYLINDERS

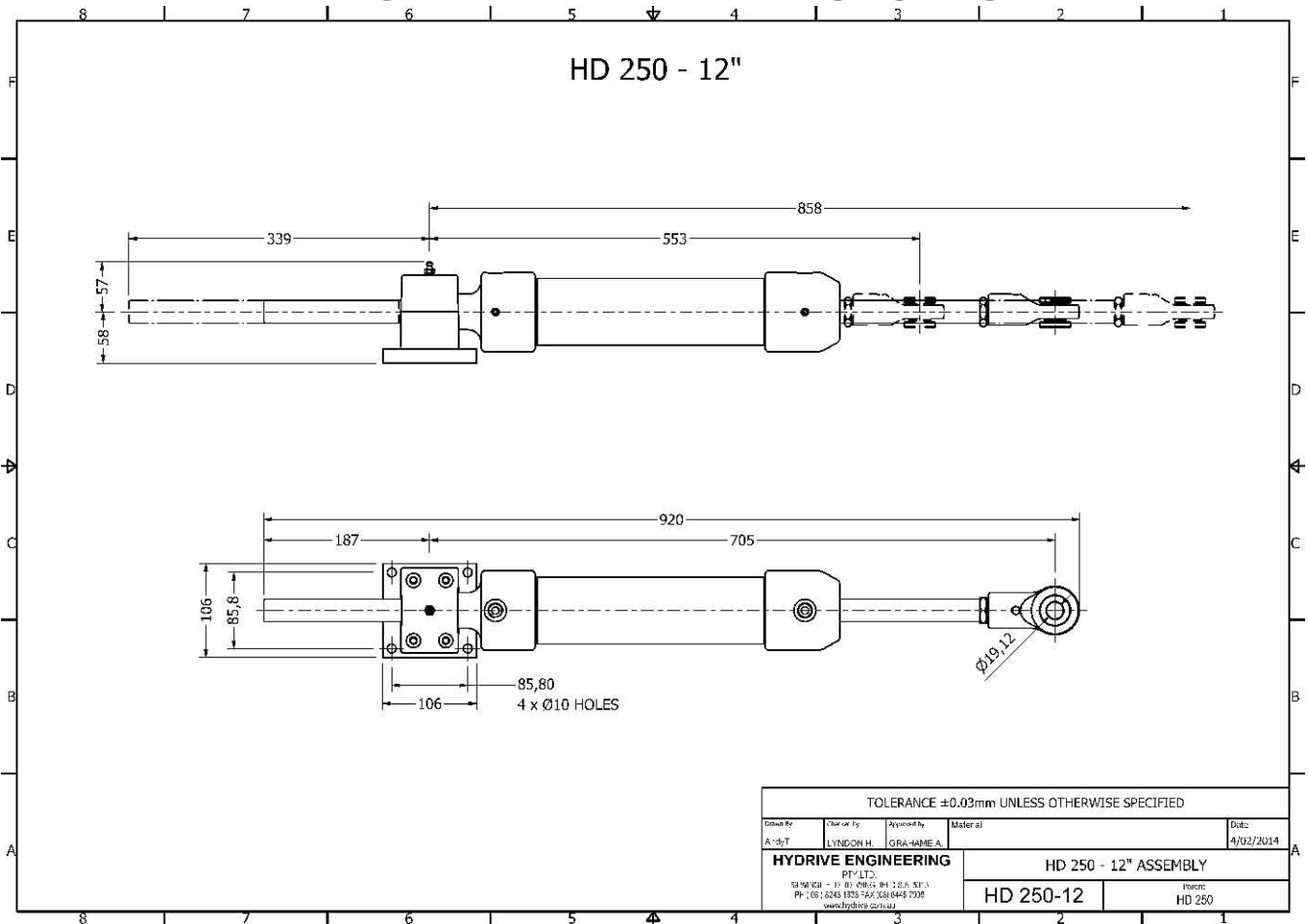


Full articulated ball type mounting bracket - high tensile bronze.

Bronze/Stainless steel spherical rod-end assembly complete with s.s mounting bolt and lock nuts

MODEL HD250-12

NOMINAL DIMENSIONS



NOTE: dimensions are nominal only and subject to change without notice. These dimensions should be used only as a general guide to the footprint of space required. Final drilling and fitting of the cylinder should only be done once the unit has been delivered and on-site.

Bore diameter:- 2.5"
 Stroke - 12" (304mm)
 Volume - 811cc
 Tiller length - 265mm

Cylinder thrust @ 1000psi = 1870KgF
 Rudder torque @ 1000psi @ 0 degrees = 497KgM
 Rudder torque @ 1000psi @ 70 degrees = 407KgM

Maximum Working Pressure - 1500psi

Design Pressure - 2250psi