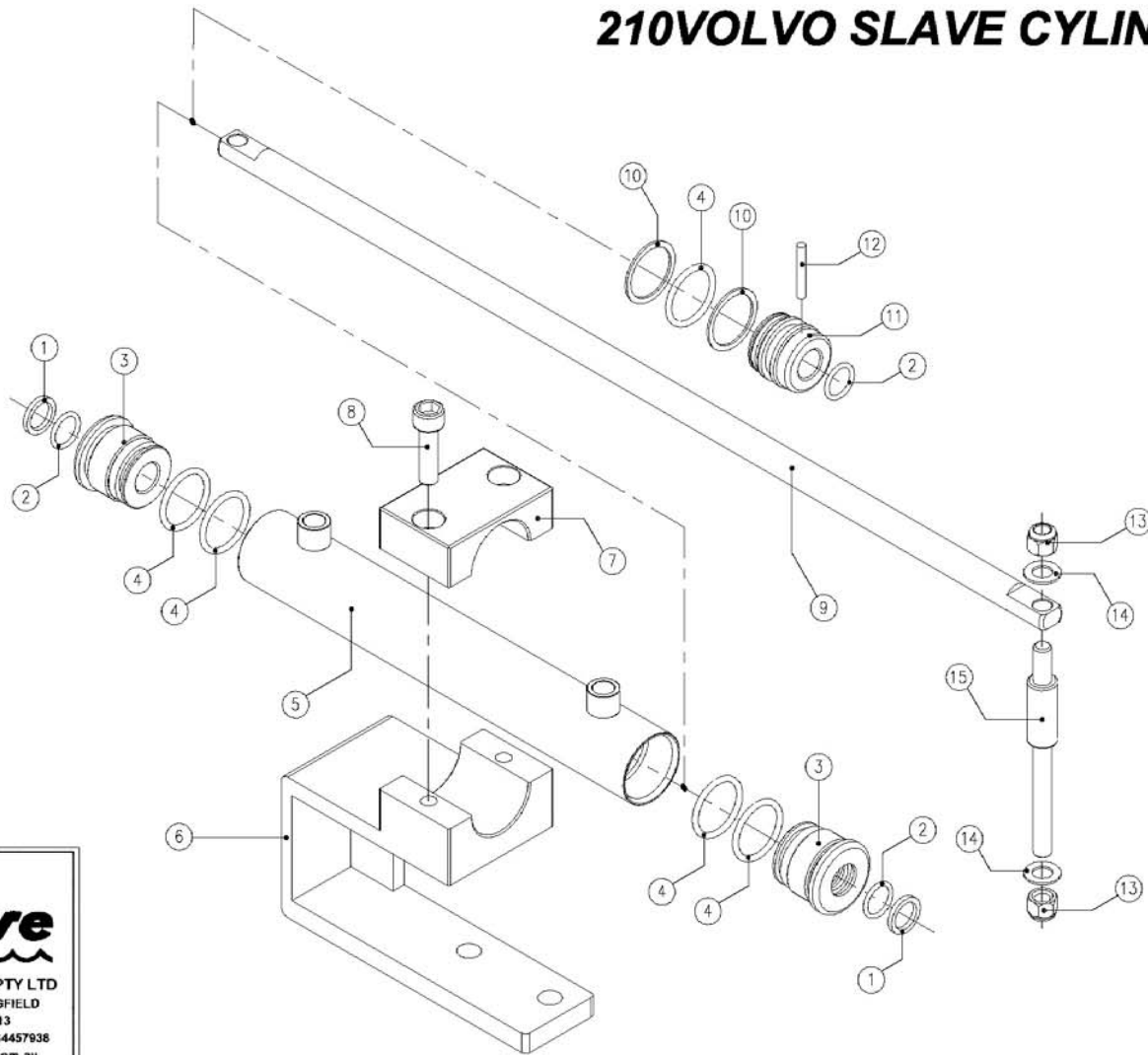


## 210VOLVO SLAVE CYLINDER



## 210 VOLVO SLAVE CYLINDER

NUMBER	DESCRIPTION	PART NUMBER	QTY
1	ROD WIPER SEAL	WS-10252	2
2	O-RING PISTON ROD	N7-114	3
3	END CAP MOUNTING END	EC-6345	2
4	O-RING CYLINDER	N7-216	5
5	CYLINDER	CY-6343	1
6	MOUNTING BRACKET BASE	MO-6206B	1
7	MOUNTING BRACKET CAP	MO-6206C	1
8	M10x35 BOLT	SC-10157	2
9	PISTON ROD	PR-6355	1
10	BACK UP WASHER	BW-10100	2
11	PISTON	PI-6358	1
12	DOWEL PIN 3/16"x1 1/4"	DO-10186	1
13	3/8"UNF NYLOC NUT	NU-10133	2
14	3/8"x3/4"x18g S/S WASHER	WA-10135	2
15	MOUNTING PIN	MO-6206	1

**HyDrive**

HYDRIVE ENGINEERING PTY LTD  
 59 WINGFIELD ROAD, WINGFIELD  
 SOUTH AUSTRALIA 5013  
 Tel: (08) 82431633 Fax: (08) 84457938  
 E-Mail: sales@hydrive.com.au  
 Web Site: www.hydrive.com.au